

NEW

## Exgene™ FFPE Tissue DNA

FFPE란?  
Formalin-Fixed,  
Paraffin Embedded  
tissue



아직도 Xylene을 처리하여 파라핀 제거 하시나요 ?

이젠 유기용매 사용없이, 쾌적하게 !

Buffer 하나로 OK !



01

간소화된 프로토콜로  
Total DNA를 간편하게 추출 가능

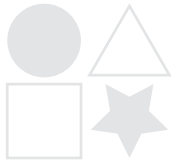


02

기존의 Xylene method를 벗어나  
저자극의 비 유기용매 방식 사용으로  
보다 안전하게 추출 가능



제공되는 비 유기용매 방식 외에  
xylene method를 추가 제공하여  
다양한 추출방식 선택 가능



기존 Xylene method 대비  
고순도 고수율의 DNA 추출 보장



RNase A를 기본 구성품으로 제공하여  
RNA-FREE DNA 추출 가능

03

04

## 기존의 Xylene Method (~ 30 min 소요)



## Non-xylene Method (5 ~ 10 min 소요) (Exgene™ FFPE Tissue DNA)



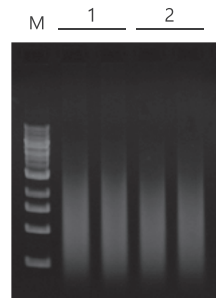
기존의 10 Step의 과정을  
단, 3 Step으로!

Cat. No	Products	Scale	Size
138-150	GeneAll® Exgene FFPE Tissue DNA	mini	50
138-152	GeneAll® Exgene FFPE Tissue DNA	mini	250

제품 특징

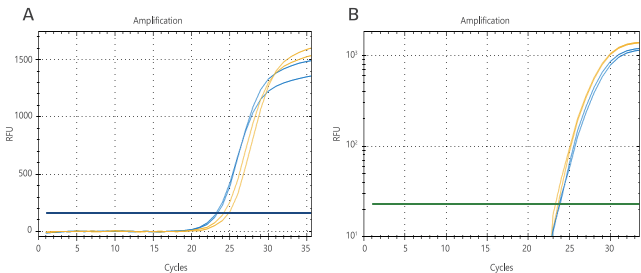
- Paraffin 과 Formalin-fixed tissue 에서 고순도 고수율의 total DNA 추출이 가능한 제품
- 진올만의 Buffer DP를 제공하여 기존 Xylene 사용 대비 간소화된 방법으로 파라핀 제거 가능
- 비 유기용매 방식 Buffer를 사용하여 파라핀을 제거 함으로써 보다 안전하게 순수한 total DNA 추출 가능
- Xylene method를 별도로 제공하여 다양한 추출 방식 선택 가능 (Appendix manual 제공)
- RNase A solution을 기본적으로 제공하여 RNA-free DNA 추출 가능
- PCR product : ~500 bp 가능
- 조직 내 감염균 확인을 통한 질병 진단 Kit로의 활용 가능

FFPE sample에 따른 실험 Data

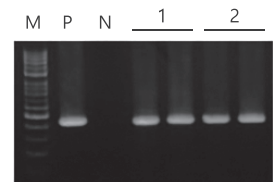


Total DNA was purified from human liver FFPE using Exgene™ FFPE Tissue DNA and Supplier A. The 5 μm, 1 section / 50 μl was taken to the total DNA purification. The purified total DNA was loaded on a 1 % agarose gel.

Lane 1 : Total DNA from Exgene™ FFPE Tissue DNA  
Lane 2 : Total DNA from Supplier A

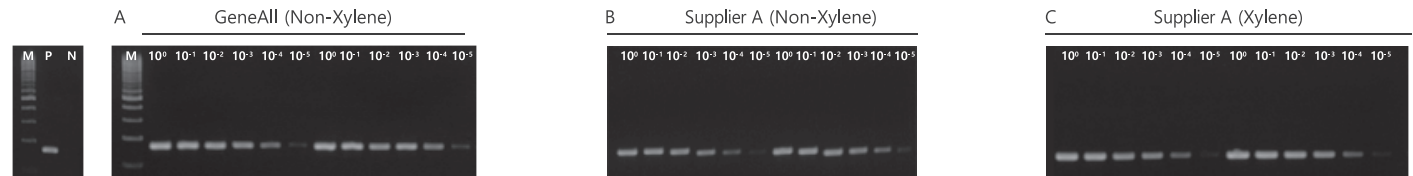


Real-time PCR was performed with purified DNA using Exgene™ FFPE Tissue DNA (Blue) and Supplier A (Yellow). The DNA was purified from human stomach FFPE (Panel A) and human colorectal cancer FFPE (Panel B). Real-time PCR was carried out with human GAPDH primer sets and detected by AmpMaster™ qPCR Master mix.



Total DNA was purified from human stomach FFPE infected by helicobacter pylori samples using Exgene™ FFPE Tissue DNA and supplier A. The DNA of helicobacter pylori was amplified by PCR and confirmed by electrophoresis.

Lane P : Positive control - Helicobacter pylori DNA as template  
Lane N : Negative control - no template  
Lane 1 : PCR of DNA from Exgene™ FFPE Tissue DNA  
Lane 2 : PCR of DNA from supplier A



Comparison evaluation between Exgene™ FFPE Tissue DNA and supplier A were performed through PCR with GAPDH primers. DNAs were purified from human cervix FFPE sample using both of Exgene™ FFPE Tissue DNA (Panel A) and Supplier A without (Panel B) and with xylene solution (Panel C) respectively.

Lane P : Positive control - Jurkat gDNA as template  
Lane N : Negative control - no template